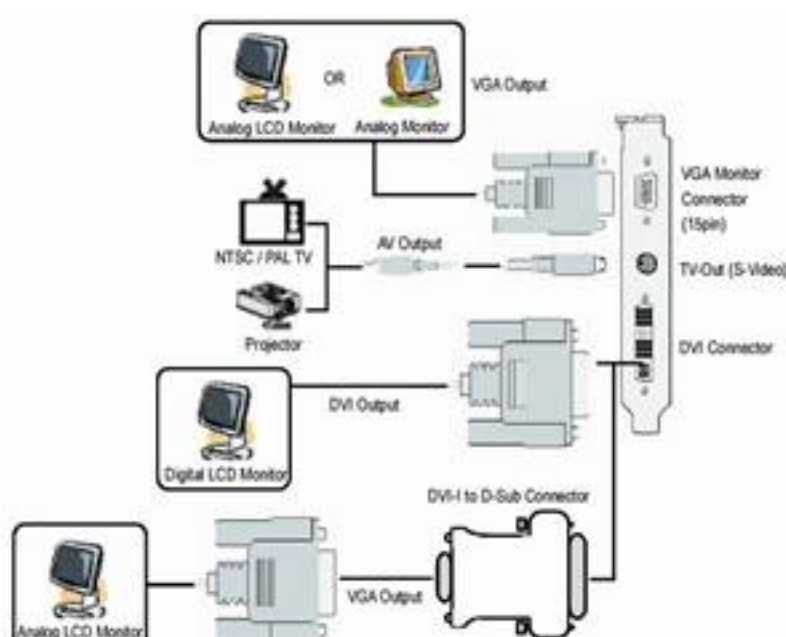




# HOW TO START USING YOUR 2U RACKMOUNT

## Before Turning on the Machine:

Begin by connecting your Keyboard and Mouse followed by your Monitor. Note that there are two monitor outputs; the **Primary** output is a VGA 15-pin port that is used for any standard monitor (this will be your interface/desktop monitor). The second monitor can either be connected to the DVI connector or the S-Video/RCA connector. **NOTE: Do Not Use the VGA connector on the lower-left, it is the on-board video card is disabled to allow full control from the 3D Accelerated Video Card.**



## Using the DVI Connector:

If you have a DVI monitor or a matrix that utilizes DVI please use it directly on this connector. You can also purchase a small DVI to VGA adapter like this one:

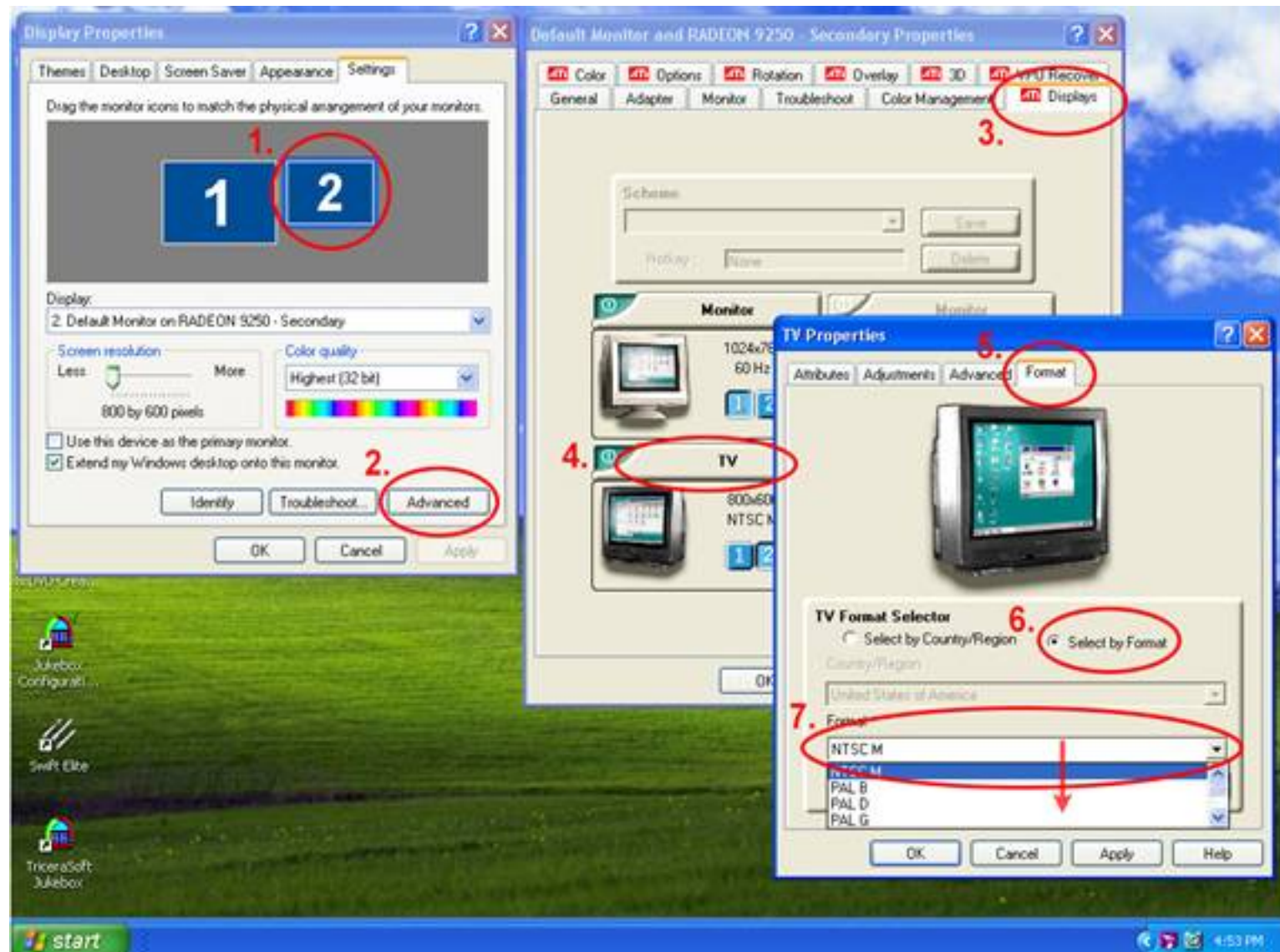


**Tripp Lite DVI to VGA Adapter  
Analog DVI-M/HDDB15F**

This will allow you to use this connector as a regular VGA monitor or a projector that only accepts VGA.

## Using the S-Video/RCA Connector:

If you are connecting to a TV, VCR, or alternate that uses composite use this connector directly. You can connect the S-Video cable directly into this port. To use RCA (Composite Yellow Connector), first connect the supplied Adapter (S-Video to RCA multimedia Adapter) followed by the RCA cable. The Composite signal is by default set to NTSC (**note:** if you are using a European system you will need to change the output to PAL in the Display Properties/Settings/Advanced after you connected and turned on the machine), refer to image below:



## How to Connect Your Sound System:

Connect your 1/8" Jack to the Green audio connector. Use a 1/8" to 1/4" Adapter to connect to a large audio mixer. **Note:** Swift Elite mixes audio on this channel in stereo, a mixer or amp is not required past this point. A Microphone can be connected on the Pink audio connector (this is your MIC/Line-In).

## Software Startup:

Once your computer is connected and started (the power button is inside the drive bay), allow your computer to load onto the desktop. To begin using the **Swift Elite** Hoster double-click the Swift Elite icon on the desktop (Primary Monitor). Running Swift Elite will load the interface on the main monitor and the video window will load full-screen on the second display (the second display will turn black). Begin your playback of songs, videos, or karaoke. You will find that your existing collections are categorized as Videos and Karaoke and prepared ready to use from the Song Collection. Select a collection then add your songs into the playlist to begin (be sure your fader is on the correct Deck). To get further on instruction on Swift Elite please enter the Swift Elite Help Guide.